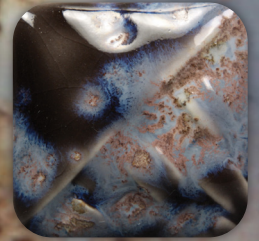




# Stoneware Combo

## SW-156 GALAXY



SW-156  
Galaxy

CONE 6

Technique was achieved by brushing on two (2) layers of base glaze (SW-156 Galaxy).  
Then apply two (2) layers of top glaze, letting glazes dry between coats.



SW-117  
Honeycomb

SW-117 Honeycomb  
over  
SW-156 Galaxy



SW-127  
Olivine

SW-127 Olivine  
over  
SW-156 Galaxy



SW-131  
Birch

SW-131 Birch  
over  
SW-156 Galaxy



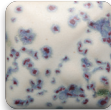
SW-138  
Lemon Meringue

SW-138 Lemon Meringue  
over  
SW-156 Galaxy



SW-148  
Lime Shower

SW-148 Lime Shower  
over  
SW-156 Galaxy



SW-153  
Indigo Rain

SW-153 Indigo Rain  
over  
SW-156 Galaxy



SW-168  
Coral Sands

SW-168 Coral Sands  
over  
SW-156 Galaxy



SW-172  
Macadamia

SW-172 Macadamia  
over  
SW-156 Galaxy



SW-174  
Leather

SW-174 Leather  
over  
SW-156 Galaxy



SW-177  
Raspberry Mist

SW-177 Raspberry Mist  
over  
SW-156 Galaxy



SW-181  
Night Moth

SW-181 Night Moth  
over  
SW-156 Galaxy



SW-183  
Oxblood

SW-183 Oxblood  
over  
SW-156 Galaxy

Vases shown are fired to Cone 6 on White Stoneware body.



MaycoColors.com





# Stoneware Combo



SW-156  
Galaxy

## SW-156 GALAXY

CONE 10

Technique was achieved by brushing on two (2) layers of base glaze (SW-156 Galaxy).  
Then apply two (2) layers of top glaze, letting glazes dry between coats.



SW-117  
Honeycomb

SW-117 Honeycomb  
over  
SW-156 Galaxy



SW-127  
Olivine

SW-127 Olivine  
over  
SW-156 Galaxy



SW-131  
Birch

SW-131 Birch  
over  
SW-156 Galaxy



SW-138  
Lemon Meringue

SW-138 Lemon Meringue  
over  
SW-156 Galaxy



SW-148  
Lime Shower

SW-148 Lime Shower  
over  
SW-156 Galaxy



SW-153  
Indigo Rain

SW-153 Indigo Rain  
over  
SW-156 Galaxy



SW-168  
Coral Sands

SW-168 Coral Sands  
over  
SW-156 Galaxy



SW-172  
Macadamia

SW-172 Macadamia  
over  
SW-156 Galaxy



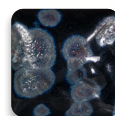
SW-174  
Leather

SW-174 Leather  
over  
SW-156 Galaxy



SW-177  
Raspberry Mist

SW-177 Raspberry Mist  
over  
SW-156 Galaxy



SW-181  
Night Moth

SW-181 Night Moth  
over  
SW-156 Galaxy



SW-183  
Oxblood

SW-183 Oxblood  
over  
SW-156 Galaxy



Vases shown are fired to Cone10 on White Stoneware body.

MaycoColors.com

